

C

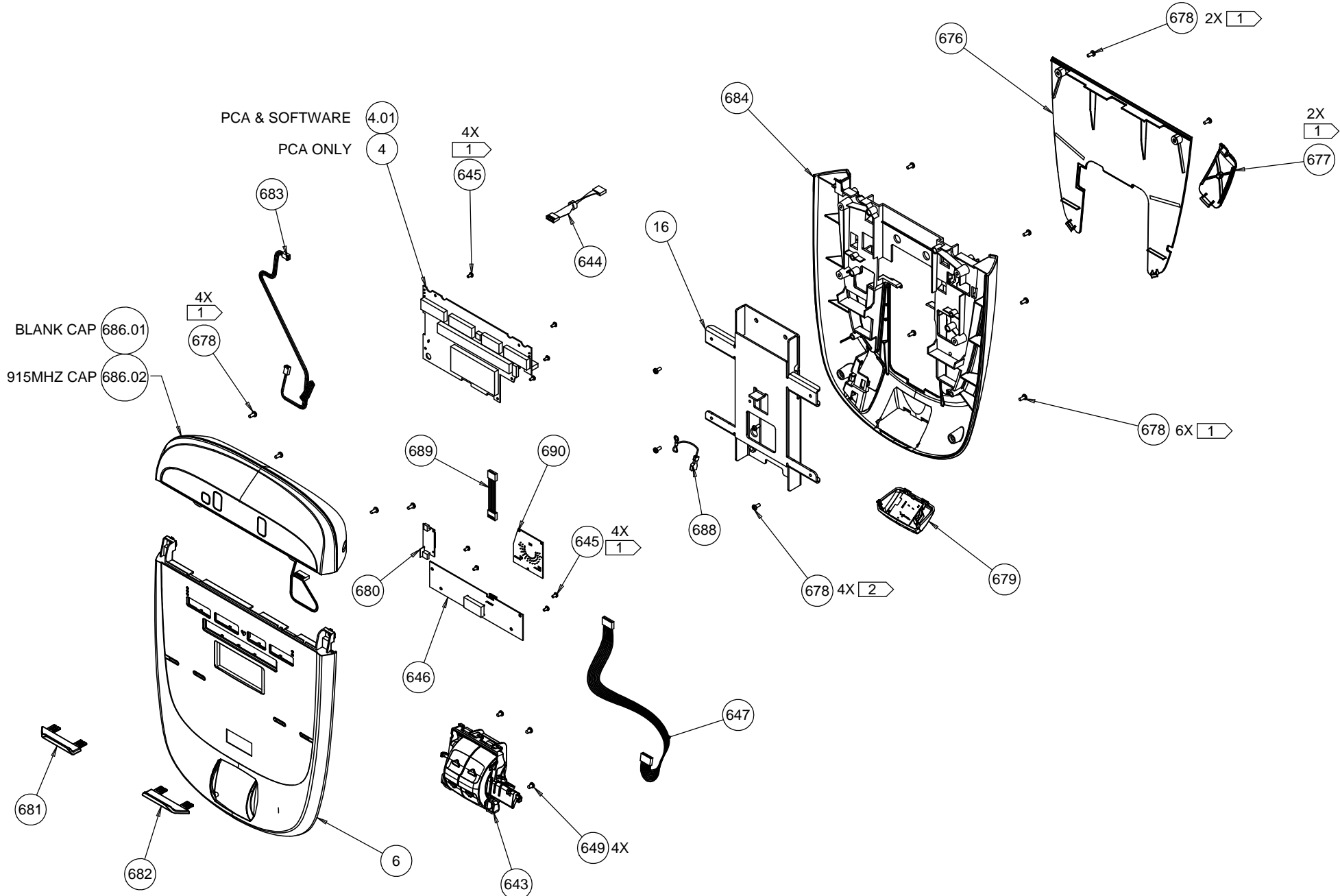
B

A

3

2

1



PRODUCT:
P30 CONSOLE

MPRECOR

| | | | | | | | |
|---------|----------|-----|------|------|----|------------|--------|
| DRWN BY | 07.10.13 | WDC | SIZE | PAGE | OF | DWG. NO. | SUBREV |
| CS | 05.20.13 | BG | A | 1 | 1 | 302310-101 | B |

P30, AMT10, (AYZT, A854, AYZR)

| Part Number | Description | Bubble Number |
|--------------|-------------------------------------|---------------|
| 301113-405 | PCA, DISPLAY,P30, W/TOTAL BODY GUY | 4 |
| 301122-103 | ASSY, UPPER PCA & SW, AMT 835, P30 | 4.01 |
| 59222-101 | DISPLAY HOUSING, P30, AMT, 835, ASS | 6 |
| 300350-105 | ASSY,MACHINE CONTROL,(SINGLE) | 643 |
| 35754-009 | ASSY,CABLE,6C, .1 CTR,1-1,TIN,9" | 644 |
| MGCN013-025 | SCREW,MCH,6-32X1/4,PANHD,PHIL, | 645 |
| 301097-151 | ASSY,PCA & SW,DISPLAY,P30 METRICS,S | 646 |
| 40011-015 | ASSY,CBL,8C,.1 CTR,1-1,SN,15" | 647 |
| 300285-102 | WELDMENT,DISPLAY,PT - P40/P30/P20 | 648 |
| PARCN013-038 | SCREW, PANHD, PLASTITE, TRILOBE, #6 | 649 |
| 57095-101 | KIT,P30,AMT,ENG,TV915,W-SHIPPER | 675 |
| 300278-101 | PLASTIC, SERVICE COVER, DISPLAY, P2 | 676 |
| 300283-101 | PLASTIC, HR DOOR, P40/P20 | 677 |
| MGCN016-038 | SCREW,MCH,8-32X3/8,PANHD,PHIL, | 678 |
| 300204-105 | ASSY, HEAD PHONE JACK, P20/P30 - 91 | 679 |
| 300812-101 | BOARD, CHR & WIRELESS, SALUTRON,100 | 680 |
| 300282-103 | SUPPORT,BOOK,LEFT,P40/P30/P20 | 681 |
| 300282-104 | SUPPORT, BOOK, RIGHT, P40/P30/P20 | 682 |
| 40015-020 | ASSY,CBL,3C,.1 CTR,W/RAMP,1-1,SN,20 | 683 |
| 300277-103 | PLASTIC, REAR, DISPLAY ,P40/P30/P20 | 684 |
| 300205-103 | PRODUCT,BLANK CAP,P10/P20/P30/P40 | 686.01 |
| 300210-105 | PRODUCT,AMBIENT CAP,US 915MHZ,P10/P | 686.02 |
| 301415-008 | CBL,1C,20AWG,#8 RING/250X032 QD REC | 688 |
| 49800-005 | ASSY,CABLE, 6C,.1 CTR,1-1,TIN, W/FE | 689 |
| 300330-101 | ASSY, PCA & SW, LED STRIDE DIAL, DI | 690 |
| 300474-405 | PCA, TOTAL BODY GUY, P30/P40 | 690 |
| 301451-026 | ASSY,CBL,3P3C-6P3C(W/RAMP & RIBS),. | 706 |
| 302403-241 | LITERATURE KIT, P30 (ALL), EN | 998 |